

We welcome all to the community of Jesus: to connect, to learn, to worship, to serve. We are an ecumenical congregation in a Presbyterian Church (USA) form.

# The Relay

Alamance Presbyterian Church • 4000 Presbyterian Road • Greensboro, North Carolina, 27406 • 336.697.0488 • [www.alamancechurch.org](http://www.alamancechurch.org)

CONTENTS	PAGE
CHILDREN	10
DID YOU KNOW?	11
THE PASTORS' DESK	4
FOOD THOUGHTS	14
ITEMS OF INTEREST	2
Birthdays and such	
MEMORIAL GIFTS	11
MUSICAL NOTES	12-13
WOMEN'S WORK	3
THE BACK PEW	16
Volunteer schedules, hours of operation, etc.	

## Marching forward into springtime



upon one's personal sins) or Mardi Gras, Fat Tuesday (a time of feasting and merriment, as one uses up the last bits of eggs and butter in the pantry before the fasting days of Lent begin).

We choose to feast! We celebrate Mardi Gras with a pancake supper in Brown Fellowship Hall on **Tuesday, March 5, 6-7:30 p.m.** All-you-can-eat pancakes with the standard sort of accompaniments is \$8 for adults, \$4 for children, \$25 for a family of four or more. Profits benefit our Christian Education programs.

Lent begins on **Ash Wednesday, March 6**. Join us in the sanctuary at **6:30 p.m.**, after Open Door fellowship supper, for a worship service that will include both the taking of Communion and the imposition of ashes.

See the rest of the newsletter for helpful information about events and fundraisers throughout March and April. Prepare your hearts and minds for renewal, as springtime draws nearer and as we anticipate the wondrous joys of Easter Sunday.

## Current Officers

The Session is the governing body of our congregation. Our officers are called "Elders." They serve a three-year term, called a "class."

Stated meeting is on the **fourth Sunday of each month, at 6 p.m.** in the Scott-Monroe-Anderson room — unless otherwise noted.

### Class of 2019:

Harold Alexander  
Allison Brown  
Ken Carraway  
Dana Smith  
Tommie Lynn Sullivan

### Class of 2020:

Clint Aydelette  
Elizabeth Hadley  
Lee Shores  
Sara Strandberg  
Kirby Ward

### Class of 2021:

Pam Dixon  
Randy Maness  
Wendy Mills  
Keith Morris  
Gary Trull

### Youth Elder:

Nick Purvis

See page 9 for more about what this young man is doing.

Soon, thoughts of ice and snow will be long behind us, and we will comment instead about how much pollen is on our cars and in our sinuses. It won't be long after that time of yellowness before we face what is (usually) a long time of heat and humidity.

It's all part of God's plan, as the seasons follow each other over and over across the eons. Take time during the season of Lent (March 6-April 20 this year) to be present in the moment. Lent is a time for fasting, for abstinence, for self-examination, for reflection about what it means to be a human being who has chosen Jesus Christ as Lord and Savior.

The last day before Lent starts is commonly known as either Shrove Tuesday (a somber time of reflection

## Daylight Savings Time begins at 2 a.m. on Sunday, March 10!

Remember to set your clocks ahead one hour before you go to bed on

**Saturday, March 9.**

## Open Door menus: February and March

Most **Wednesdays** at **5:45 p.m.**, a covered-dish meal (entrée provided, you bring sides and desserts) is shared by all, in the Gathering Place. After the meal, we meet in the sanctuary at **6:30** for devotions. This year, our focus of study is on the gifts of the Spirit. February = Generosity.

### March = Faithfulness.

All are welcome at the table.

- **February 6:** Beef stroganoff
- **February 13:** Roast turkey
- **February 20:** Spaghetti
- **February 27:** Salisbury steak
- **March 6:** Black bean enchilada bake
- **March 13:** Fettucini Alfredo
- **March 20:** Baked-potato bar
- **March 27:** French toast casserole (breakfast for supper)

## Monthly mission offerings

Missions Ministry Team meets on **third Wed. each month, at 5p**, in Scott-Monroe-Anderson room. The team designates recipients of special missions offerings, throughout the year.

You may use the little Missions envelope included in each week's bulletin packet to make a donation to special missions. Or, you may simply designation your check that you want the money to go to that particular cause.

Designated missions (subject to change, as need arises):

- February: Youth Fund
- **March:** U-Kirk college ministry
- **April:** World Vision

## New fellowship group

M.E.E.T.S. (Meet, Eat, Entertain, Travel, Socialize) is a new ADULTS ONLY fellowship group — designed mainly for “empty nesters” but any adult may attend. Singles and couples welcome. Some outings will require physical activity.

**Meet: Fri., Mar. 1, 6 p.m.** (in time to drive to the event).

**Eat:** When you get there.

**Entertain:** Watch the Carolina Thunderbirds play ice hockey.

**Travel:** to the Winston-Salem Fairgrounds Annex.

**Socialize:** Watch some ice hockey.

Feel free to bring friends. Kindly leave at home: your children, your grandchildren, your pets.



## Do tell

Tell the church office about important events in your life, in the life of the community, or in the life of the congregation (336.697.0488 ext. 121, [info@alamancechurch.org](mailto:info@alamancechurch.org)).

When you move, it is especially nice to let the church know, so we can send your giving statements to you.

Suggestions for topics are welcome — if yours won't fit, there are other ways to spread the news. Guest articles written by, or submitted by, church members are subject to approval by senior staff members; and may be edited for space, content, and grammar.

Guest photographs are also welcome, if space is available, depending on what other church events are publicized each month.

## February Birthdays

- 3 Burt Caveness
- 6 Logan Forbis, Branson Linnens
- 8 Geneva Boswell, Ken Carraway, Graham Dail
- 9 Pat Lovell, Jean Poe
- 11 Dick Royal, Tyler Trull
- 12 Teddi Irwin, Nick Purvis, Brenda Stevens, Roger Wood
- 13 Clarence Oliver
- 16 Danny Thomas
- 19 Bella Craig, Fay Haralson
- 20 Phil Wadsworth
- 21 Joy Thomas
- 22 Melissa Martin
- 24 Nora Church, Dena Fail
- 26 Colton Strandberg
- 27 Marina Starr
- 28 Andrew Burgess, Lou Walker

## March Birthdays

- 2 Nancy Michaels
- 3 Treva Caveness, Lester Dyson
- 4 Sue Fields
- 8 Jared Gill, Zack Hobbs
- 9 Gerald Coble, Maelyn Goodman, Leta Pillion, Betty Sizemore, Tony Sizemore
- 10 Amni Carraway
- 12 J.P. Preston, McCartney Ward
- 13 Linda Carraway
- 14 Peggy Fields
- 17 Mike Ford, Kristin Hogan, Jacob Thomas
- 18 Grace Dagenhart, Ernest Thompson
- 19 Tina Garrett
- 21 Amanda Hogan
- 22 Barbara Durham, Betty Hunter
- 23 Floyd Fogleman
- 24 David McMurtrie
- 27 Brad Benton
- 31 Griffin Brown, Connie Fish, Sherry Jensen

## Presbyterian Women of Alamance Presbyterian Church

Six circles of women meet regularly, as outlined below. Together, they form the Presbyterian Women of Alamance Presbyterian Church. All dates, times, and meeting places are subject to change, as needed.

**Agapé:** Meets on **second Tuesday** at **11 a.m.** to go out and eat; **12:30 p.m.** in the Uffman classroom.

**JoAnn Camp** (formerly Open Door): Meets at **6:30 p.m. on second Tuesdays**, usually in members' homes.

**L.I.F.T.** (Ladies in Fellowship Together): meets **every Sunday** as a Sunday school class, **9-9:50 a.m.**, in the Community room. Second Sunday each month is a circle meeting.

**Martha Brown:** Meets at **11 a.m. on the second Tuesday**, on weeks when the second Tuesday and second Wednesday happen in the same week, in the Parlor.

**Mary, Martha, Lydia, and Ruth:** Meets at **1 p.m. on the second Wednesday** on weeks when the second Tuesday and second Wednesday happen in the same week, in the Coble House.

**Red Hat:** Group decides monthly where and when to meet.

### Our Purpose

Forgiven and freed by God in Jesus Christ, and empowered by the Holy Spirit, we commit ourselves to nurture our faith through prayer and Bible study, to support the mission of the church worldwide, to work for justice and peace, and to build an inclusive, caring community of women that strengthens the Presbyterian Church (U.S.A.) and witnesses to the promise of God's kingdom.

The website [presbyterianwomen.org](http://presbyterianwomen.org) has more information — or contact Brenda Bayne ([bjbusa@aol.com](mailto:bjbusa@aol.com)) with any questions about the Presbyterian Women of Alamance Presbyterian Church.



*Dining for Women*

Changing the world one dinner at a time

## Dining for Women

<https://diningforwomen.org>

All women are invited to the monthly meetings of the *Dining For Women* APC chapter.

This is an opportunity to commune with other women of the church. Bring your sister, mother, daughter, friend, neighbor. Bring a dish to share, and a donation equivalent to what you would spend if you went out to eat. No donation is too small.

**When:** Second Thursday of each month, at 7 p.m.

**Where:** Coble House Center for Outreach.

**What to bring:** A covered dish to share, and a monetary donation to *Dining for Women*.

**How it works:** Women of all ages gather to break bread, to socialize, to learn about a different grantee being assisted each month, to make a donation equal to what you would have spent dining out (or whatever you feel comfortable giving), and to help women in extreme poverty to better themselves.

The group will hold meetings at Coble House instead of rotating among members' homes. Members will be expected to sign up to host: to be responsible for setting up for the meal, preparing beverages, etc. — everything you would do in your own home, except that you don't have to clean your house first.

For more about Dining for women, check their website: <https://diningforwomen.org>. Or, contact Kathy Fay with your questions ([kathyefay@gmail.com](mailto:kathyefay@gmail.com)).

## A thank you note that wouldn't fit on page 15

Jean Poe wishes to express her deep gratitude for all the prayers, cards, visits, calls — and most especially for the wonderful meal train food — during her recent health emergency.

Jean has remained positive throughout the whole process of having surgery to correct a broken femur, and the ensuing recovery period. She wants you all to know that she loves you, and is happy to be back among the crowd. Be patient with her as she toddles along with her walker. Try not to get in her way, she's in a big hurry to get well.



## Ministry Musings

Greetings, Family:

I recently had some friends come visit me at the brick house — and though we did a lot of exploring and enjoying Greensboro as part of their visit — we also did a lot of sitting and chatting in front of the fireplace.

We talked about our memories of seminary, we talked about many pressing social issues facing our country, we talked about their upcoming wedding, we talked about our families. The fireplace wasn't always lit during these conversations, but it anchored the living room in such a way that provided comfort in a space where we could come together and share conversations that mattered.

I've thought a lot about space since coming to Alamance Presbyterian Church: about how it is used, who gets to use it, how it is made safe, how it is made beautiful, how it is made sacred.

In addressing the issues the Child Development Center has had with their space and ours, I've had to have formal discussions about space. I find that it's a subtext in many of the other conversations I have — be they Session conversations about energy conservation, or community conversations about where to hold an event.

Of course, the subtext in any conversation about space is always a personal one — how much space do I need to flourish?

As we enter the season of Lent, I think such meditations are important, but they needn't only be concerned with physical space. Just as I asked during Advent, I ask you now, "How can you meditate on making more space for Christ in your daily life over the next forty days? What 'clutter'— emotional or

otherwise — can you shed so that God can fill you up this sacred season?"

We tend to think of Lent as a season of "giving up"— but maybe, instead, it can be a season of "taking on." Perhaps you might take on a daily prayer practice for the next forty days, or read with your child each evening for thirty minutes. Perhaps you could think more creatively about how you tithe; or find different Christ-focused individuals or organizations to give a small amount to each day — whether it's buying a cup of coffee for a homeless person, or tithing your time by volunteering at the Food Pantry.

In the past years my Lenten practices have included everything from giving up meat for forty days, to going for daily bike rides, sabbathing from technology, and even going to bed a half hour earlier each night — all as a means of getting closer to God.

And you know what? Each of those practices has worked! In being intentional about my spiritual space, even if it's only for forty days, I have not only found more room in my life for Christ, I've expanded my ability to extend grace to others.

I hope that in this Lent you can make more space for Christ in your own life. I look forward to hearing about what other spaces in your heart open up as a result.

Until next month,

*Pastor Jess*

Associate Pastor for Discipleship

## Requested recipe

That "lemon" dessert at the Feb. 27 Open Door meal was not lemon. It was pineapple. Here is the recipe for the delicious variation on the classic congealed salad.

### Pineapple Pretzel Salad

#### Ingredients:

- **2 cups** crunchy pretzels, crushed
- **1 cup** melted butter
- **3 TBSPS** sugar
- **2 (3-oz.) pkgs.** pineapple gelatin
- **1 cup** boiling water
- **1 cup** crushed ice
- **2 (20-oz.) cans** crushed pineapple in heavy syrup, drained (reserve the syrup for use in another recipe, if desired)
- **2 cups** whipped topping (such as Cool Whip)
- **8 ounces** cream cheese, softened
- **1 cup** sugar

#### Instructions:

1. Preheat oven to 350 degrees F.
2. Combine crushed pretzels, melted butter, and sugar in medium bowl. Transfer mixture to an UNGREASED 9 x 13 baking dish. Spread evenly over bottom of dish. Bake for 10 minutes — no longer! Let cool completely.
3. Meanwhile: Bring 1 cup water to boil. Sprinkle gelatin over the water, stir until it dissolves. Add 1 cup crushed ice, stir until it dissolves.
4. Pour pineapple into a strainer, and press it with the back of a spoon to drain it as much as possible. Add to the gelatin mixture. Refrigerate until partially set, about 15 minutes.
5. While that mixture sets, cream together the cream cheese and sugar. Fold in the whipped topping.
6. Spread cream cheese mixture over the cooled crust.
7. Carefully spoon the thickened gelatin/fruit mixture over the cream cheese layer.
8. Cover. Chill 4-6 hours or until firm.

## Staff:

**Lead Pastor**, the Rev. Dr. Kyle Goodman, is head of staff. He is responsible for the general administration of all programs of the church. As well, he “shall in all things be committed to teaching the faith and equipping the saints for the work of ministry.” (Book of Order, G-2.0501)

Dr. Goodman is responsible for “studying, teaching, and preaching the Word, for celebrating Baptism and the Lord’s Supper, and for praying with and for the congregation.” (BOO, G-2.0504)

**Associate Pastor for Discipleship**, the Rev. Jess Rigel, assists the Lead Pastor in his duties. In addition, she is “responsible for a quality of life and relationships that commends the gospel to all persons and that communicates its joy and justice.” (BOO, G-2.0504). She also oversees the part of Christian Education that includes young people of college age and beyond.

**Director of Music**, Katie Hensley, confers with the pastors to “ensure that anthems and other musical offerings are appropriate for the particular service.” (BOO, W-1.4005b.) Katie’s work is integral to other church programs, such as the Youth Group and Kids J.A.M. (Kids, Jesus, Art, and Music).

**Director of Children’s Ministries**, Joy Thomas, oversees the part of the Christian Education ministries that includes children through grade 5. She leads the fellowship group Kids R.O.C.K. (Kids Reaching Out to Christ’s Kingdom); and the music and arts program Kids J.A.M.

**Director of Youth Ministries**, Andrew Long, oversees the part of the Christian Education Ministries that includes youth from grades 6-12. He leads the Middle School and Senior High fellowship groups.

**Financial Secretary** Jeanine Rossi is responsible for day-to-day accounting needs of the church. She works closely with Session, through both the Administrative Ministry and Trustee Ministry Teams, to ensure responsible use of monies entrusted to the church by the congregation.

**Secretary/Administrative Assistant** Lynn Barnes answers office phone and e-mail, makes lists, prints and collates weekly bulletin packets, prints semi-monthly newsletters; and other tasks as necessary.

## Ministry Teams:

Ministry teams (committees) of the Session, the governing board of our congregation, include the following:

**Administrative Team** manages the church personnel, property, and finances. The team focuses on day-to-day operations, and keeping physical facilities in good working order, so the church can better serve the community and the world.

A subset of the Admin. Team, the **Trustee Team**, meets quarterly to oversee church finances; and to make recommendations about church trust fund accounts.

**Bereavement Teams** offer refreshment or a light meal to mourners, at or around the time of a funeral, at the family’s discretion.

**Building & Grounds Team** is a subset of the Admin. Team. B&G oversees repairs, maintenance, and improvements to all our buildings: the sanctuary building, the Grant building, the Education building, the Coble House Center for Outreach, the little yellow house, the Associate Pastor’s house, the Picnic Pavilion, the shed — and other church properties in the community.

B&G is responsible for the design and maintenance of church grounds, parking lots, drives, walkways, plantings, and lawns. Their oversight is compatible with duties of the **Cemetery Committee**, which has

guardianship of the cemetery map, to record burials and grave assignments. Team oversees general maintenance of monuments, fencing, gravestones and plot markers. A planned columbarium will be cared for by the Cemetery team.

**Christian Education Team** is directly responsible for the children, youth, and adult Sunday school programs.

**Congregational Care and Outreach Team** ministers to visitors and members alike, making connections between those who have questions and those who can give answers.

**Culinary Arts Team** prepares and serves food for fellowship and fundraiser meals. CAT prepares and serves meals after natural disasters, to those directly affected and to rescue workers. CAT serves meals to Habitat for Humanity workers, and at Greensboro Urban Ministry’s Potters House dining room.

**Fellowship Team** plans and implements fellowship events for many groups in the congregation, and suggests fundraising events for Session’s consideration.

**Missions Team** designates recipients of special missions offerings, throughout the year. Team also oversees mission trips by many individuals and groups in the congregation, for local, national, and international mission efforts.

**Safety Team** seeks to assure that all in the congregation are safe, at all times, from disease, injury, or any sort of disaster which might happen when any group is gathered.

**Worship & Arts Team** oversees many aspects of worship. The group discusses how we, together with all members of the Body of Christ, can best ascribe worth to the Spirit of the Living God. **Meets semi-monthly** to consider needs that fall within their purview, to make recommendations for Session.



Thank you SO MUCH, Alamance, for your generous giving to the January special offering that was collected for our Wycliffe ministry!

We are always amazed at how God provides for this mission through the church, His Body, and we are so thankful for APC's consistent generosity over my last five years of ministry with Wycliffe!

Thank you so much for your continued financial and prayer partnership with our ministry — you are a vital part of bringing God's Word to the indigenous peoples of Mexico!

- Jesse & Erin (Padgett) Atkinson



From a *Mission Partnership Update* newsletter, posted on bulletin board outside sanctuary:

[...] I'd like to share a few nagging questions that weigh on me even when our work is going well and making a difference in others' lives. Should there be more partnerships where the materially poor and weak have opportunities to help themselves? Do we serve in ways that suggest that those in need truly have nothing to offer? How can we sharpen our discernment about our own brokenness and others' dignity as we strive to answer the call to love our neighbors, especially the downtrodden? It seems to me that these are important things to wrestle with as we serve others in Jesus' name. Sincerely, *Todd Luke*  
(847.867.0085; [tluke2300@aol.com](mailto:tluke2300@aol.com), [ycatanmission.com](http://ycatanmission.com))



UKIRK Greensboro is a PC(USA) ministry of Salem Presbytery, that serves students at Greensboro College, Guilford College, Guilford Tech, and UNC-G.

As a non-congregation-based ministry, UKIRK is led by a board of directors from congregations across the presbytery. Currently, Alamance Presbyterian Church holds two spots on the board, filled by Mary Ellen Shores and Dr. Kyle Goodman.

The Rev. Katie Barrett Todd is Executive Director, and Campus Minister, since August of 2017. She has served in campus ministry, and as a congregational minister, in several states.

UKIRK GSO offices are in a ministry house on S. Mendenhall St. Holderness House serves both as a ministry space and as a residential home for three students and a resident coordinator.

Weekly programming for UKIRK is on Monday mornings, Tuesday evenings, Wednesday at lunchtime,



and — during Lent — on Thursday afternoons.

For the 2018-19 academic year, UKIRK GSO's focus is *Reframing Welcome*. We've spent time in study, worship, fellowship, service and retreats. We've learned about equity, privilege, racism, gender identity, relationships, refugee needs, and more. We're studying the lives and work of theologians; and we've studied the PC(USA) Young Adult Volunteer program, the Taizé community, and Abraham Heschel.

On **Thursdays at 5:15 p.m. during Lent**, a new worship service, *Sanctuary*, will be 30 minutes of music, prayer, poetry, and scripture designed to offer thanksgiving for the past week, while looking expectantly at the week to come.

The **last Tuesday of every month at 7 p.m.**, we gather for worship with communion in the sanctuary of the Presbyterian Church of the Covenant. All our worship opportunities are open to the public.

UKIRK GSO is grateful to Alamance Presbyterian Church for the support you've given us, from board leadership, delicious lunches, pastoral participation, to program support. We are very excited to assist in leading worship at Alamance on **Sunday, March 24**.

To learn more about UKIRK GSO, visit [www.ukirkgso.org](http://www.ukirkgso.org) or @ukirkgso on Instagram & Facebook.





## APC: *SPRING* into a healthy lifestyle!

Girl Scout Troop 41121 Kayla Miller's  
Gold Award Project

### Save these dates:

#### **Saturday, March 9:** Let's Get Cooking!

- **When:** 1-4 p.m.
- **Where:** Brown Fellowship Hall
- **What:** Join Mr. Vincent Webb, DTR, Family and Consumer Science Assistant Agent from NC State University, to learn about nutrition and healthy cooking.

Register by **March 1** at [apchealthyiving@gmail.com](mailto:apchealthyiving@gmail.com)

#### **Saturday, March 23:** Let's Get Active!

- **When:** 1-4 p.m.
- **Where:** Brown Fellowship Hall
- **What:** Join Ms. Phylathia Mohammad, Certified Samba Instructor for kids and adults.

Register by **March 15** at [apchealthyiving@gmail.com](mailto:apchealthyiving@gmail.com)

#### **Saturday, April 6:** Let's Save Lives!

- **When:** 1-4 p.m.
- **Where:** Brown Fellowship Hall
- **What:** Join Chief Bowers, from the Alamance Fire Department, as he leads an informative training session on CPR and first aid basics.

Register by **March 29** at [apchealthyiving@gmail.com](mailto:apchealthyiving@gmail.com)

These events are family-friendly. Please be sure to let us know, when registering, how many and who will attend.

#### **Saturday, May 4:** Health Fair!

- **When:** 1-4 p.m.
- **Where:** Brown Fellowship Hall and outside environs, weather permitting.
- **What:** Join us for a day of fun; learn about various local health agencies and services available in our community!

The Safety Team offers an in-depth Self Defense Class on six **Wednesday nights,, from 6:30-8:30**, beginning in **mid-March**.

Class is offered to Child Development Center staff, and will be open to the congregation at large. Cost is \$35 per student. Class will be held in Brown Fellowship Hall. Preregistration is required.

Physical participation by students is required, but the physical activity will not be extreme.

For additional information, contact David White (336.580.8683; [davidwhite1955@hotmail.com](mailto:davidwhite1955@hotmail.com)).

## Daniel Ritchie to speak in worship March 17

Join us in the sanctuary at **10 a.m.** on **Sunday, March 17** as motivational speaker Daniel Ritchie preaches.

"God has blessed me in allowing me to travel all across this country and internationally sharing my testimony, preaching and speaking in a motivational context.

"I was born without arms and spent the majority of my life being told that I was a hopeless mistake and woefully insufficient to lead a full life. Yet, at age 15, God used a preacher to tell me of God's love for me and that I was "fearfully and wonderfully made" (*Psalms 139*); and I accepted Christ as my Lord.

"From that moment on, the work of the Spirit has blown me away. Where there was once bitterness and anger, God was bringing out love and joy. Where fear had once reigned, Christ was assuring me that He is always with me. The work of the Spirit was showing itself in very visible ways.

"I now spend my time traveling, preaching & speaking at churches, conferences and youth events in the United States and abroad..

"Beyond the ministry aspect of my life, I am a married man and father. I have been married to my best friend Heather for 11 years and we have two remarkable kids: Teague and Elliott, ages 5 and 2. I love playing & wrestling with my two kids, reading, drinking coffee, watching football and enjoying the outdoors.

For more, [www.danielritchie.org](http://www.danielritchie.org)



[www.alamancechurch.org](http://www.alamancechurch.org)





We had a very exciting weekend for those who went to the Winter Jam concert on Saturday, and ice skating on Sunday.

There was never a dull moment, from standing out in the rain for 45 minutes waiting to go into the concert early, to Jonah and Christopher getting a selfie with Michael Tate of Newsboys, to pushing the youth around on a blue seal ice skating. We had a wonderful weekend with the youth and their families.





Join the APC Youth Group on their trip  
to downtown Greensboro, to tour the

# International Civil Rights Museum

134 South Elm Street  
Greensboro, North Carolina

The International Civil Rights Center & Museum  
is an archival center, collecting museum, and teaching facility;  
devoted to the international struggle for civil and human rights.

The Museum celebrates the nonviolent protests  
of the 1960 Greensboro sit-ins that served as a catalyst  
in the civil rights movement.

## Saturday, March 23

Cost is \$10. Tour is open to the entire church.

R.S.V.P. to Andrew Long by March 10!  
([andrew@alamancechurch.org](mailto:andrew@alamancechurch.org); 336.697.0488 ext. 123)



## Children's worship and fellowship

Join us for one or all! ALL children are welcome, whether they attend church regularly, occasionally, or just stop by to check us out.

The APC Children's Ministry at Alamance Presbyterian Church strives to provide a safe and loving church community where children will learn who Jesus is, experience his love, and grow to become his followers.

### Sunday school

All children from PreK-5th grade meet together from **9-9:50 a.m. each Sunday**. The curriculum is *Godly Play*. The Godly Play space is on the lower level of the Grant building.

### Children's Church

Joy Thomas, Dir. of Children's Ministries, and helpers lead this worship. Children are ALWAYS welcome in the sanctuary — Children's Church is offered for children to stay through a children's message, then leave for a lesson of their own. They return after the sermon to continue worship.

Childcare is provided for infants through 3-year-olds, in a nursery in the Education Building, staffed by approved volunteers.

### Kids R.O.C.K.

**Kids Reaching Out to Christ's Kingdom** is a fellowship group for 2nd-5th grades. Kids R.O.C.K. meets from **5-6:30 p.m. every Sunday** during the school year, for a simple meal and a program that explores Christian life from a child's perspective.

Parents: please fill out a permission form for each child. Sign up to provide a meal, if you want to help Kids. R.O.C.K. in that way.

Dress your child to move and be active at Kids R.O.C.K.!

### Kids J.A.M.

**Kids, Jesus, Art, and Music**, a worship arts ministry, meets in the Music Room on the lower level of the sanctuary building, **from 5:15-5:45 p.m. on Wednesdays** (before Open Door fellowship) during the school year. Kids J.A.M. is for ages K-5th grade, **free of cost**, and open to all children.

Adult volunteers and children come together to make friends, sing songs, play instruments, get moving, create art, have fun, and spread the love of Jesus out into the world.

Students at the Child Development Center can be picked up from their classrooms and escorted to the music room, and parents can pick up from there at **5:45!**

Contact Katie Hensley, Dir. of Music, or Joy Thomas, Dir. of Children's Ministries, to find out how to volunteer.



## Alamance Presbyterian Church

**Sunday, April 14, 2019**

**4 p.m.: Dye Eggs**

**4:30: Egg Hunt begins**

**5 p.m.: Hotdog supper**

ALL children (toddlers - 5th grade)

are welcome to participate. **PLEASE** either e-mail Joy Thomas ([joy@alamancechurch.org](mailto:joy@alamancechurch.org)), call the church office (336-697-0488 ext. 132), or sign up in the Gathering Room to let us know you are coming. We want to have plenty of eggs and food for everyone.

**Remember to bring your own Easter Basket!!!**





Please, please, please, could you donate stuffed plastic eggs and/or candy to stuff into plastic eggs? Director of Children's Ministries Joy Thomas wants to get a jump on stuffing the eggs we will need.

At present, we anticipate the need for 3,500+ eggs for this annual event.

Also, we need empty egg cartons, for dyeing eggs. Look for the giant collection box in the Gathering Place — don't confuse it with the Food Pantry box!

And, for those of you who sit at home, twiddling your thumbs, wishing you had something to do but at a complete loss what that thing might be, we offer the opportunity to help Joy stuff some of those 3,500 eggs.

Let Joy know you want to help, and she'll gladly put you to work.

## Live streaming the Alamance experience

It's now possible to look and listen to Sunday morning worship at Alamance live, on-line. A few steps before you start your live streaming experience are simple to accomplish:

1. First, go to our website, [www.alamancechurch.org](http://www.alamancechurch.org). Scroll down the homepage for the *Live Sunday Worship & Info* box — and choose that option, to go to the *Worship* page. (Or, go to *Connect* at the **top** of the page, and choose *Worship* from the drop-down list.)

2. On the *Worship* page, the box for *Worship Live Streaming* is on the **top right** of your screen. Choose that option. It sends you to the Livestream page for Alamance Presbyterian Church ([www.livestream.com](http://www.livestream.com)).

3. ***Before you can access the live streaming service***, you'll be required to open an account with Livestream, either with your e-mail or your Facebook account. The Livestream site will prompt you to enter your e-mail. It will then send you an e-mail, and that e-mail will instruct you how to enter a password of your own choosing. After that, you'll get an e-mail thanking you for joining Livestream.

4. On the Alamance Presbyterian Church website, the *Worship Live Streaming* page has all the recorded services still available; and options for services still to come. (The not-yet-happened ones are listed so you can log in on those Sundays at **10:15 a.m.** to experience worship with the rest of the congregation, as it unfolds in real time.)

## Buy Two, Get One!



Confused? Don't be! Christian math is not like regular math.

"Have you ever come on anything quite like this extravagant generosity of God, this deep, deep wisdom? It's way over our heads. We'll never figure it out." - **Romans 11:33, The Message**

Keep a Cup,  
Give a Cup!

## Now! Now! Now!

For the low, low price of only \$10, ***you*** can buy a lovely, genuine ceramic coffee cup to keep for yourself — and, ***at the same time*** — give a lovely, genuine ceramic coffee cup to a visitor!

Buy some ***today!***

Congregational Care Team representatives are standing by, ready and willing to help you with your purchase. Thank you!

[www.alamancechurch.org](http://www.alamancechurch.org)

## Musically speaking ...

### Adult Choir

The APC Adult Choir rehearses nearly every **Wednesday evening** of the year — unless otherwise noted — in the choir loft, from **7-8:30 p.m.** The choir is an enthusiastic group of singers who provide choral music during worship, by performing anthems and by leading the congregation in singing hymns and responses.

This musical ministry is open to anyone of high school age or older, to make a joyful noise during worship services. Ability to read music is helpful but not required. We help each other to be our best selves, in the choir loft.

### APC Handbells

The APC Ringers, a handbell ensemble, sound out the news: They rehearse their art in the afternoon, on the **first and third Sundays of each month**, from **4-5:30 p.m.** They practice in the sanctuary. Because rehearsals are bi-monthly, there's not much time to dwell on teaching bell basics! At present, you must have some previous experience and a basic knowledge of technique to play with this group. Ability to read music is helpful. Ability to count is imperative.

The church owns four octaves of Schulmerich handbells and three octaves of chimes, donated about 30 years ago. The bells were recently refurbished; and new tables, pads, and covers have been obtained, thanks to generous contributions from the congregation.

APC Ringers currently to enhance worship with small ensembles of ringers, as well as accompanying anthems for both adult and children's choirs. The bells ring out on special occasions throughout the church year.

Each of the ringers considers their time and effort ringing to be a ministry to the church. Contact Katie Hensley at [katie@alamancechurch.org](mailto:katie@alamancechurch.org) for further information about the APC Bells.



### Resident Artist Program

The Resident Artist program is pleased to announce the addition of another singer to the choir: Mary Rosenberg. Mary is a sophomore at UNC-G, majoring in music education. Mary will sing with altos in the Adult Choir.

"My name is Mary Rosenberg, I am a military child so I don't really have a "home town." My family has lived in seven different states and nine different houses.

The longest place we've ever lived is Kansas, so I considered that my home state — if I had to pick one.

"I attend school at the University of North Carolina Greensboro and I hope to obtain an undergraduate degrees in Music Education — which is why I play so many instruments. I've always loved picking up a new instrument and finding out how it works and I want to share that with my students. I want to teach middle school band class; and possible choral education, too.

"I play clarinet (my primary), flute and alto saxophone (my secondaries). I also play recorder, piccolo, alto flute, soprano saxophone, tenor saxophone, trumpet, piano, bells, violin and guitar (strings are not my forte but I very much enjoy them). I picked up the trombone this winter.

"I love to sing and be part of a choir."





# Open Mic Night:

a fundraiser for the  
Resident Artist program

## Friday, March 22, 6-9 p.m. in Brown Fellowship Hall.

**Supper will be served:** Adults \$15 each, children eat free.  
**Entertainment will be provided.**

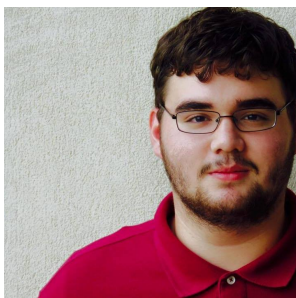
This fundraiser for our Resident Artist program lets you enjoy the many talents of these young performers, as well as talents of many of our congregants. Come enjoy a burger and fellowship while being entertained by the very talented people of APC!

Brush up your act and contact Katie Hensley  
**as soon as possible** to get listed on the program that night!

**Acceptable acts:** Musical acts. Prestidigitation. Stand-up comedy (keep it clean). Terpsichorean displays. Puppetry. Mimes. Displays of strength that won't mar the floor. Acrobatics. Jump-roping, individual or team. Dramatic readings.

**NOT acceptable acts:** Animal acts, including rodeo events. Knife-throwing — or indeed any sort of shooting (we don't have enough insurance). Anything being thrown at high speed again, no insurance). High diving (ceiling too low, no indoor pool). Ecdysiasts. Roller skate acts (too hard on flooring).

Contact Katie Hensley  
(katie@alamancechurch.org, 336-697-0488 ext. 129).



Jonathan Arp



Ali Garner-McGraw



Mary Rosenberg

### Our Resident Artists

## APC Food Pantry

Since 2010, this church has offered groceries to up to 30 hungry families each week. Distribution is on **Saturday mornings, from 10:30-11:30**. Set-up starts well before that.

**We need volunteers to help with distribution to our guests, each Saturday morning!**

This mission has priority to use Brown Fellowship Hall. That's why we don't schedule events there on Saturday mornings.

The Southeast High School R.O.T.C. helps unload and shelve a monthly truckload of food from Second Harvest Food Bank in Winston-Salem. bought with your monetary donations. SE Middle School donates fresh produce from their garden. Nathaniel Greene Elementary School donates through the Food Bus program.

Ask Connie Fish how **you** can help with the work. You can now schedule your own workdays at <http://signup.com/go/h2b6xy>.

## Food Pantry special collections

The Alamance Presbyterian Church Food Pantry started a monthly directed food collection in 2016. What is a directed food collection?" you may well ask. Each month, the APC Food Pantry designates specific food items to be donated in the big box in the Gathering Place.

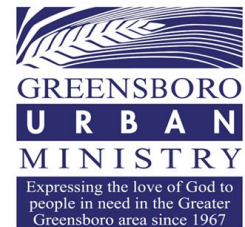
Here's a list of those specific items wanted for each month of the year.

- **March** Peanut butter, jelly
- **April** Canned fruits
- **May** Canned vegetables
- **June** Macaroni-and-cheese
- **July** Crackers
- **August** Canned pasta
- **September** Cereal, oatmeal
- **October** Canned meats
- **November** Dry pasta, and spaghetti sauce
- **December:** Soups
- **January** Canned beans
- **February** Rice

## Potter's House

Since July of 2004, this church has served supper to hungry guests at Potter's House on the third Saturday of each odd-numbered month of the year. Projected dates to serve in **2019: March 16, May 18, July 0, September 21, November 16**.

The work is intense while it lasts. Arrive at **6 p.m.** to set up for the meal. Food is served from **7-7:45 p.m.** We are cleaned up and out the door by **8:15 p.m.**



## Open Door fellowship

Most **Wednesdays at 5:45 p.m.**, a covered-dish meal (entrée provided, you bring sides and desserts) is shared by all, in the Gathering Place. After the meal, we meet in the sanctuary at **6:30** for devotions. This year, our focus of study is on the gifts of the Spirit. **February = Generosity. March = Faithfulness.**

All are welcome at the table. Any who come early to set up, or stay after to help clean up, are doubly welcome.

- February 6:** Beef stroganoff
- February 13:** Roast turkey
- February 20:** Baked spaghetti
- February 27:** Salisbury steak
- March 6:** (Ash Wednesday) Black bean enchilada bake
- March 13:** Fettucine Alfredo
- March 20:** Baked potato bar
- March 27:** French toast casserole

Girl Scout troops led by Brenda Davidson and Shannon Haynes volunteered at Potter's House in January. Guests were served beef pot roast, green beans, rice, cornbread, and a selection of desserts homemade by the scouts. The young women and their advisors served about 50 guests.

Writes Shannon Haynes: "It was a wonderful night of fellowship, and teaching the girls to be appreciative. They all had a wonderful time, so we will be back doing this again soon. If you have not participated in this ministry before, we highly recommend it."





## Memorials and honoraria

**To the Operating Fund:** In memory of Virginia Andrews by Leon & Jean Brown, Geneva Boswell, the Douglas Clapp family, Bobby & Marcia Curtis, Sid & Patricia Wray. In memory of Kris Keeler by Kirby & Cheryl Ward, Geneva Boswell, Willie & Glenda Goncharow, Fred & Celyn Holt, Guy & Nancy York, Clint & Linda Aydelette, Bobby & Marcia Curtis. In memory of Martha Sue Harden by Geneva Boswell. In memory of Helen Oliver by Deborah Henderson, Lester & Nancy Dyson, Leta Pillion, Clint & Linda Aydelette, Kirby & Cheryl Ward, Fred & Celyn Holt, Hazel Aydelette, Bobby & Marcia Curtis. In memory of Bill Starr by Lester & Nancy Dyson, Bobby & Marcia Curtis. In memory of Junior Maness by Kirby & Cheryl Ward. In memory of Ike Allred by Whitesell Dental. In memory of O.L. & Lottie Watkins by Mary Watkins. In honor of Garland Andrew by Geneva Boswell. In honor of Mae Hobbs by the Sherlie Andrew Sunday school class. In honor of Max & Sherri Durham Andrews by Geneva Boswell.

**To the Bereavement Team:** In memory of Virginia Andrews by Brad & Barbara Reece. In memory of Helen Oliver by Willie & Glenda Goncharow, Connie Hackett.

**To the Cemetery Care Fund:** In memory of Virginia Andrews by Bobby & Jean Wyrick; Loretta Allred, Floyd and Laura Fogleman; Joseph & Susan Anthony. In memory of Helen Oliver by Darrell Parker. In honor of Albert Smith by Barbara Buie Keeler.

**To the Building Improvement Fund:** In memory of Helen Oliver by Jewel Shepard. In honor of Janet Hartsell by the Sherlie Andrew Sunday school class.

**To the Music Fund:** In memory of Helen Oliver by Thelma Greeson. In memory of Gladys Forsyth by Thelma Greeson. In memory of Junior Maness

by Thelma Greeson. In memory of Bill Starr by Thelma Greeson. In memory of Bill & Helen Starr by Jackie Haines. In memory of Jack Fail by Thelma Greeson.

**To the Knit Pray Love ministry:** In memory of Linda Lynch by Brad & Barbara Reece.

**To the Food Pantry:** In memory of Virginia Andrews by Jackie Fogleman. In memory of Kris Keeler by Jackie Fogleman. In memory of Helen Oliver by Jackie Haines.

**To the Coble House:** In memory of Kris Keeler by Tommy & Linda Causey. In memory of Helen Oliver by Tommy & Linda Causey.

## Thank you notes

I would like to thank Linda Lynch and all of those in the Knit, Pray, Love knitting ministry — as well as the chaplain — for making my stay in Wesley-Long Hospital more comfortable in early February.

This was not an easy time for me, but your outreach lifted my spirits, and facilitated the healing process.

Thank you, for all that you do!

Love and light,

*Andrew Stinson*

Jan Hobbs and ladies of Knit, Pray, Love knitting ministry,

Thank you for my beautiful prayer shawl, so lovingly knot and prayed over on my behalf. Pam and Herman sent it to me at just the right time to lift up my spirits and encourage my heart. What a blessing you and your ministry are to me and many others, knowing we are surrounded as we begin our healing. I hope to be able to begin chemo soon, and will enjoy being wrapped in your love and prayers through the journey.

In Christ,

*Julie Stickler*

## Did you know?

### February trivia question

### Answer to January trivia question

**Who does what around here, anyway?**

We have new staff and new officers, and new ministry teams are forming. It's an exciting time in the life of our congregation, when some old ways of doing things are being shaken up — and some new things to do are happening! Page 6 has the first installment of *Who Does What*. Stay tuned for more information on how responsibility for various church tasks is divided among the saints.

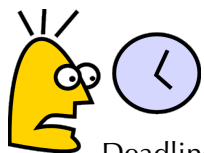
In the meantime, call Lynn Barnes in the church office with your questions. She'll either answer them herself, or refer you to the right person for answers.

## Cemetery notes

Google Maps tells us that the Alamance Presbyterian cemetery is 8.73 acres of treeless, windswept hillside. It's a very exposed acreage. In the best of weathers our cemetery is buffeted by breezes from all directions, most days.

In good weather, flowers left in the path of mowers are moved out of the way of the machines. When storms happen, floral arrangements left on gravestones fly away on the gale, unless they are securely fastened. (Duct tape is **not** a secure fastener for this purpose.)

Storms tend to dump flying debris of all sorts into the ditches along Presbyterian Road. That includes unsecured floral arrangements. When those lost flowers are collected from the ditch, they are deposited behind the brown shed near the dumpsters. You can search for them there, to replace them on the graves.



## Newsletter deadline

Deadline for the **April, 2019** issue of **The Relay**, our church newsletter, is **Monday, March 25**. Post your articles by "snail mail," by e-mail ([lynn@alamancechurch.org](mailto:lynn@alamancechurch.org)), phone the office (697-0488 x 121) — or hitch up your wagon and drive to the church to deliver it in person.



## Connect with us electronically

**"Like us" on Facebook** We maintain several pages on the social media site Facebook. "Like" the pages to receive automatic notice on your own Facebook wall.

### ... and check our website!

The church website is found at [www.alamancechurch.org](http://www.alamancechurch.org).

## Coffee hour volunteers

**Feb. 3:** Monroe  
**Feb. 10:** Burgess  
**Feb. 17:** Irwin  
**Mar. 3:** McMurtrie  
**Mar. 10:** Hadley  
**Mar. 17:** Sullivan  
**Mar. 24:** Burgess  
**Mar. 31:** Alexander



## Sunday morning volunteers

### Ushers/Greeters

#### 1st Sunday & 5th Sunday

Jon Garrett, Patty Starr  
Side Door: Pat Lovell

#### 2nd Sunday

Ada Nelson, Patty and Cayce Church  
Side Door: Birdie and Nora Church

#### 3rd Sunday

Jackie Fogleman, Telia Carroll  
Side door: Jean Poe

#### 4th Sunday

Dena Fail, Leta Pillion  
Side door: JoAnn Camp

## Offering Collectors

#### 1st Sunday & 5th Sunday

Graham Dail, Tina Garrett  
 Lee Shores Tommie Lynn Sullivan

#### 2nd Sunday

Naomi Church, Erica Lane,  
 Marcia Lane, Tony Sizemore

#### 3rd Sunday

Nick Purvis, Albert Smith,  
 Steve Starr, Kirby Ward

#### 4th Sunday

Harold Alexander, Bobby Jobe,  
 Willie Goncharow, Ed Gonzalez

## ALAMANCE PRESBYTERIAN CHURCH IS INCLUSIVE, ECLECTIC, AND REFORMED.

We are an ecumenical congregation in a Presbyterian Church (USA) form.

### CHURCH STAFF

**Rev. Dr. Kyle Goodman**, Lead Pastor  
**Rev. Jessica Rigel**, Associate Pastor for Discipleship  
**Dr. Lucius Gray**, Pastor Emeritus  
**Andrew Long**, Youth Director  
**Katie Hensley**, Director of Music  
**Rebecca Oden**, Accompanist  
**Allie Garner-McGraw**, Resident Artist  
**Jonathan Arp**, Resident Artist  
**Joy Thomas**, Dir., Children's Ministries  
**Jeanine Rossi**, Financial Manager  
**Lynn Barnes**, Administrative Assistant  
**Jane Preston**, Director, Child Development Center  
**Keri Rojas**, Asst. Director, CDC  
**Missionary: Erin Padgett Atkinson**, Linguist, Wycliffe Bible Translators

### Alamance Presbyterian Church

4000 Presbyterian Road  
 Greensboro, NC 27406  
 (336)-697-0488  
[www.alamancechurch.org](http://www.alamancechurch.org)  
[info@alamancechurch.org](mailto:info@alamancechurch.org)

## Hours of Operation

**Monday, Tuesday, Thursday, and Friday:**

**8:30 a.m. - 2:30 p.m.**

**Wednesday:**

**8:30 a.m. - 12:30 p.m.**

Finance Manager Jeanine Rossi will be in office **9a-5p M-Th**, and **9a-12 noon** on **Fridays**.

**Telephone #:**

**336.697.0488**

## Daylight Savings Time begins at 2 a.m. on Sunday, March 10!

Remember to set your clocks ahead one hour before you go to bed on **Saturday, March 9**.